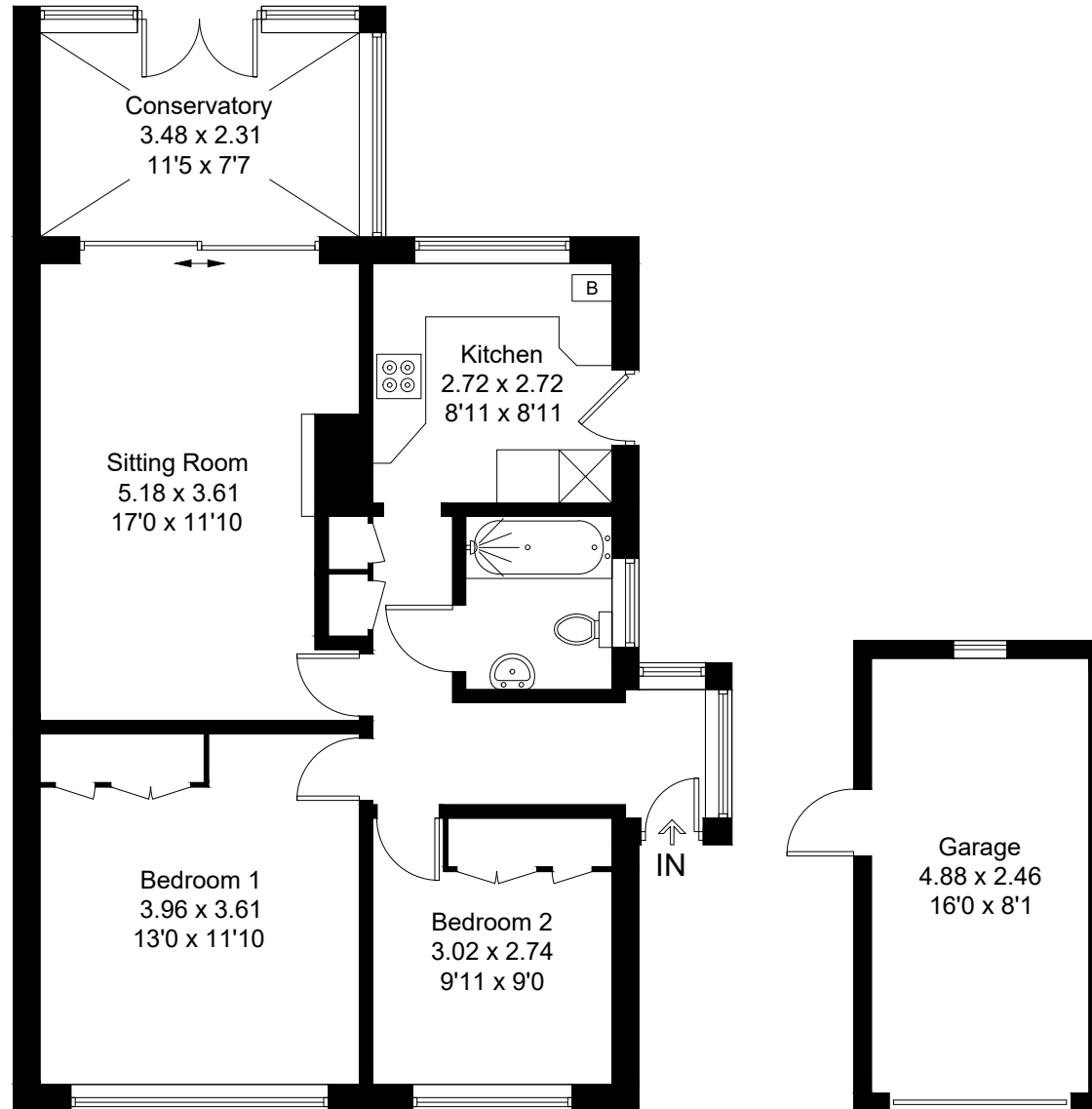


Approximate Gross Internal Area = 71.0 sq m / 764 sq ft
Garage = 12.0 sq m / 129 sq ft
Total = 83.0 sq m / 893 sq ft



Ground Floor

(Not Shown In Actual
Location / Orientation)

Created by **BAY TREE ESTATES - Telephone 01243 850451.**

These plans are for representation purposes only as defined by RICS - Code of Measuring Practice. Not to scale.(ID1066821)